

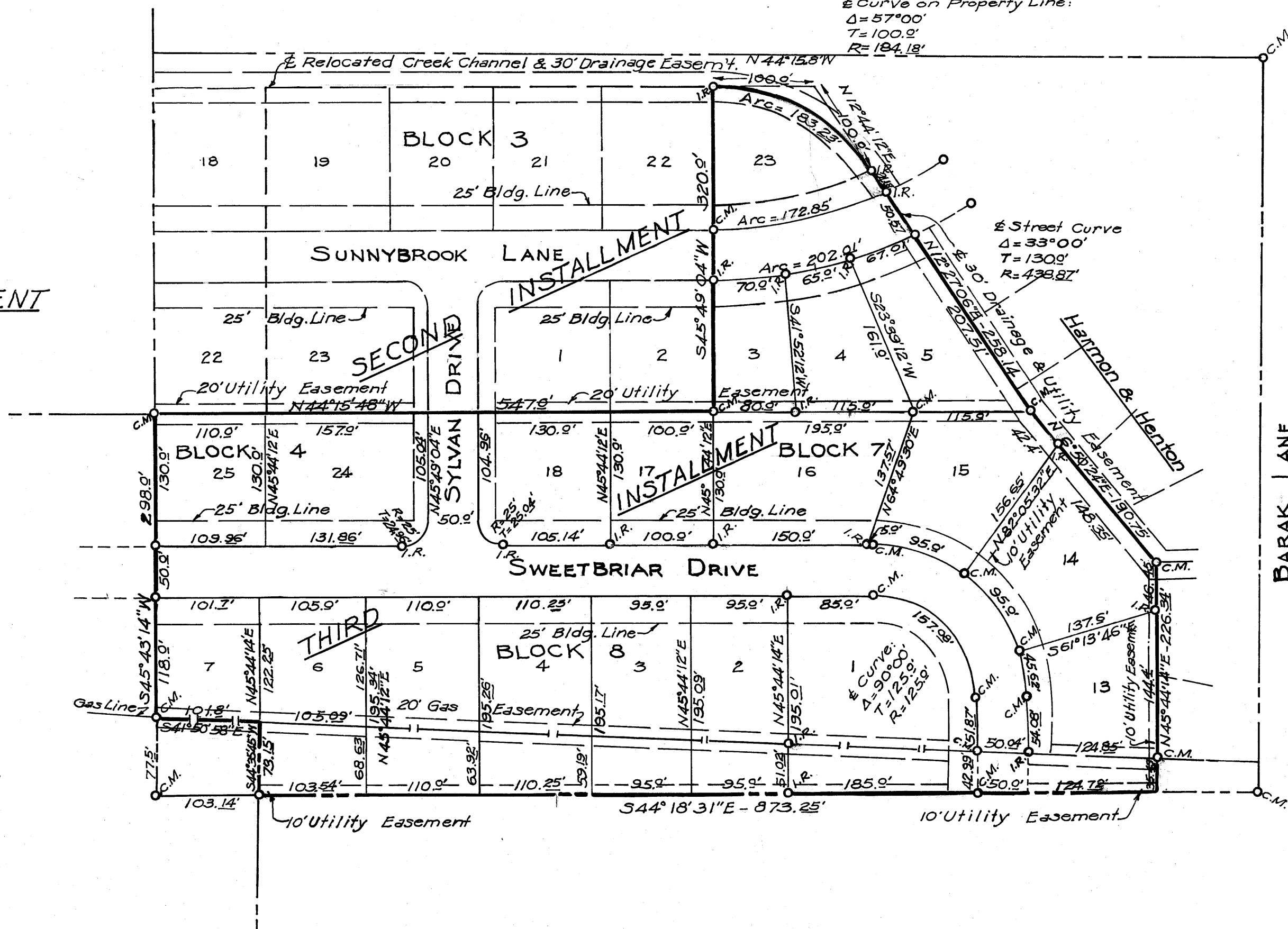
Henton

FUTURE

Curve on Property Line:  
Δ = 57°00'  
T = 100.9'  
R = 184.18'

Relocated Creek Channel & 30' Drainage Easement

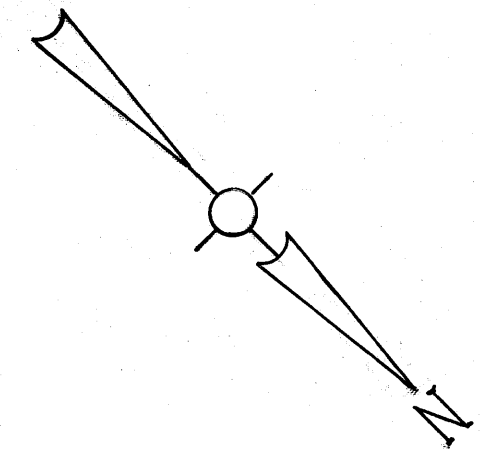
FIRST INSTALLMENT



**ENCHANTED MEADOWS**  
**3RD INSTALLMENT**  
**RICHARD CARTER LEAGUE**  
**BRYAN, BRAZOS COUNTY, TEXAS**

SCALE: 1" = 100'

JUNE, 1966  
D.R.: VOL. 256, PG. 641



on base  
to 1163

FUTURE